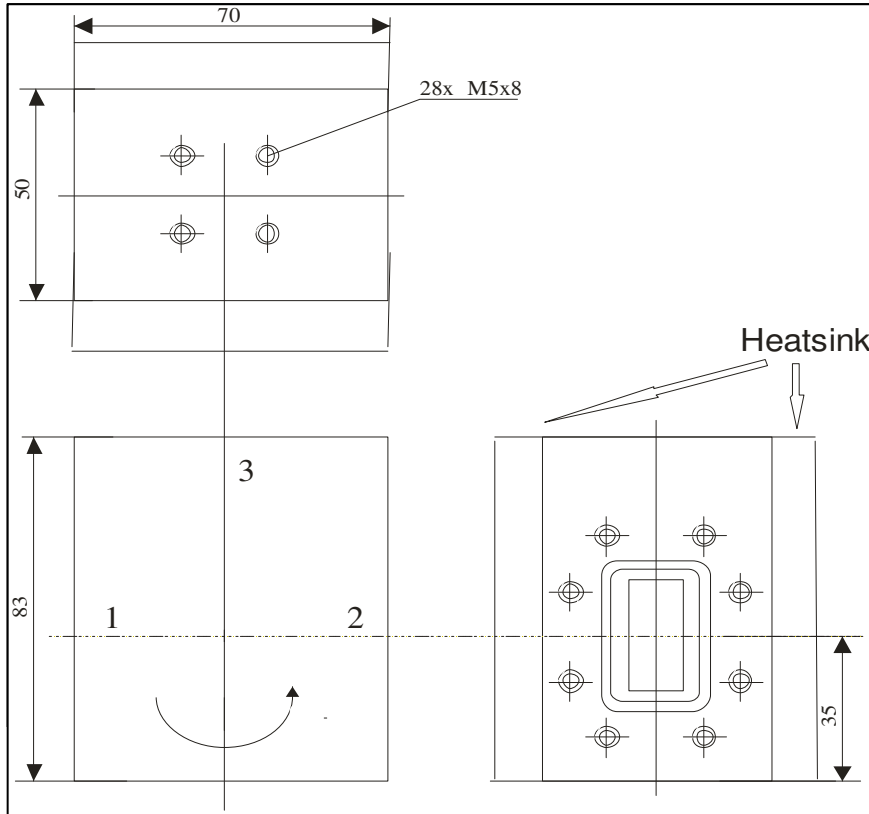




DATASHEET



Code: **CW 7,5 3 kW** Internal order code
 Name of product: **Waveguide circulator**



Parameters				
	Min	Max	Dim	Criterion
Frequency band	7,1	8,0	GHz	
Insertion loss		0,3	dB	
Isolation	20		dB	
VSWR		1,29:1		
Power handling		3	kW	
Temperature range	- 40	70	°C	
Surface temperature		80	°C	
Body material	aluminium			
Wavweguide	WR 137 (R70)			
Flange	CPR 137G			
Surface	Alodine NT-E			
	USE forced air cooling			
Standards	ISO 9001		RoHS	
Date	Sign		Confirmation	
20-Jul-2014	D. Sztaniszláv			

Root CW 6,2875 V2